

Pole Attachment Data Sheet

Pole Number 123456

Number in Sequence: #1

Backspan Length: 250 Ft

Pole Height:

30' 35' 40' 45' 50' 55' 60'

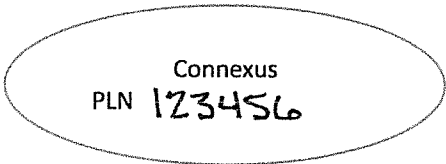
Pole Class:

1 2 3 4 5 6 7

Neutral Attachment Height: 30' 6"

At Midspan: 24' 2"

In Backspan: 25' 0"



What is the lowest electrical equipment or device on pole?

Transformer Capacitor Regulator Recloser Check box if equipment is 3 Phase

Lowest point of Connexus equipment or wire: 27' 0"

Street light attachment height (if applicable): N/A

Be sure to obtain measurement from equipment above ST-LT also; such as service clevis, drip loop, or bottom of transformer

Existing Communications

1: COX COMMUNICATIONS

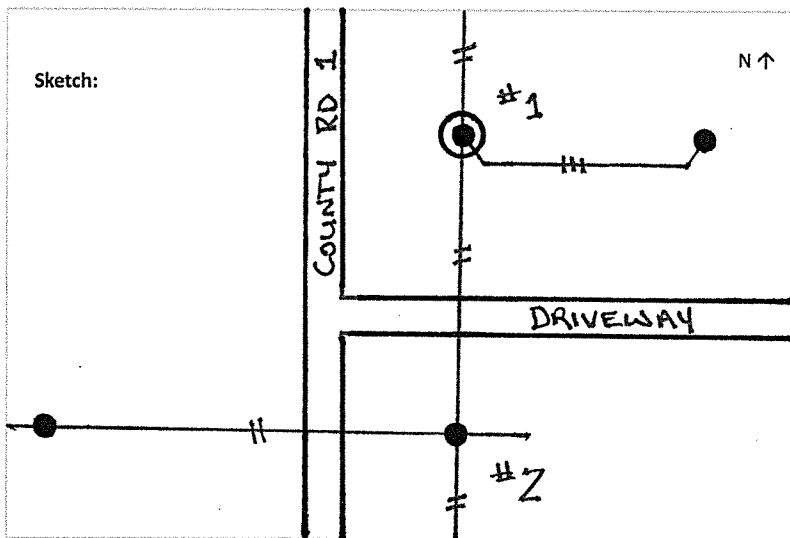
Attachment Height: 23' 8" At Midspan: 18' 0"

2: N/A

Attachment Height: _____ At Midspan: _____

Notes:

MEASUREMENT FOR LOWEST
WIRE IS FROM TRIPLEX
DRIP LOOP.



Submit Data Sheet(s) along with the Application to:

Connexus Energy, Attn: Engineering Service Specialist, 14601 Ramsey Blvd., Ramsey, MN 55303 or email: becky.bergherr@connexusenergy.com.