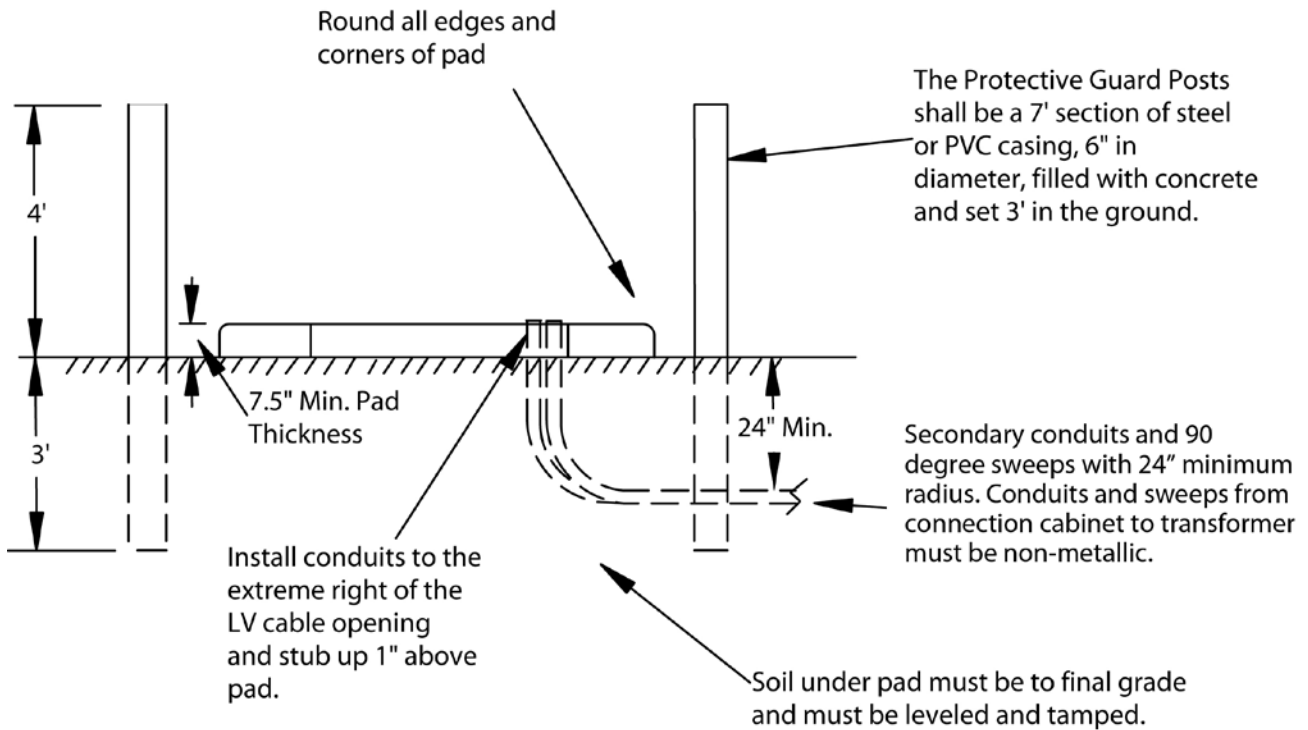
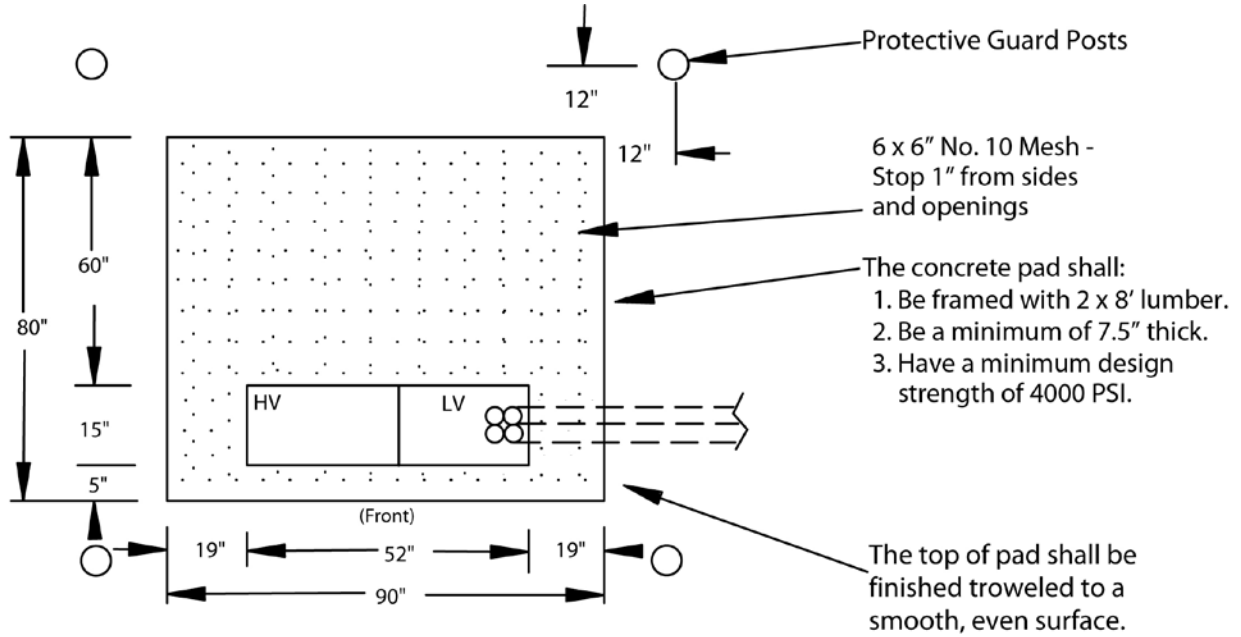
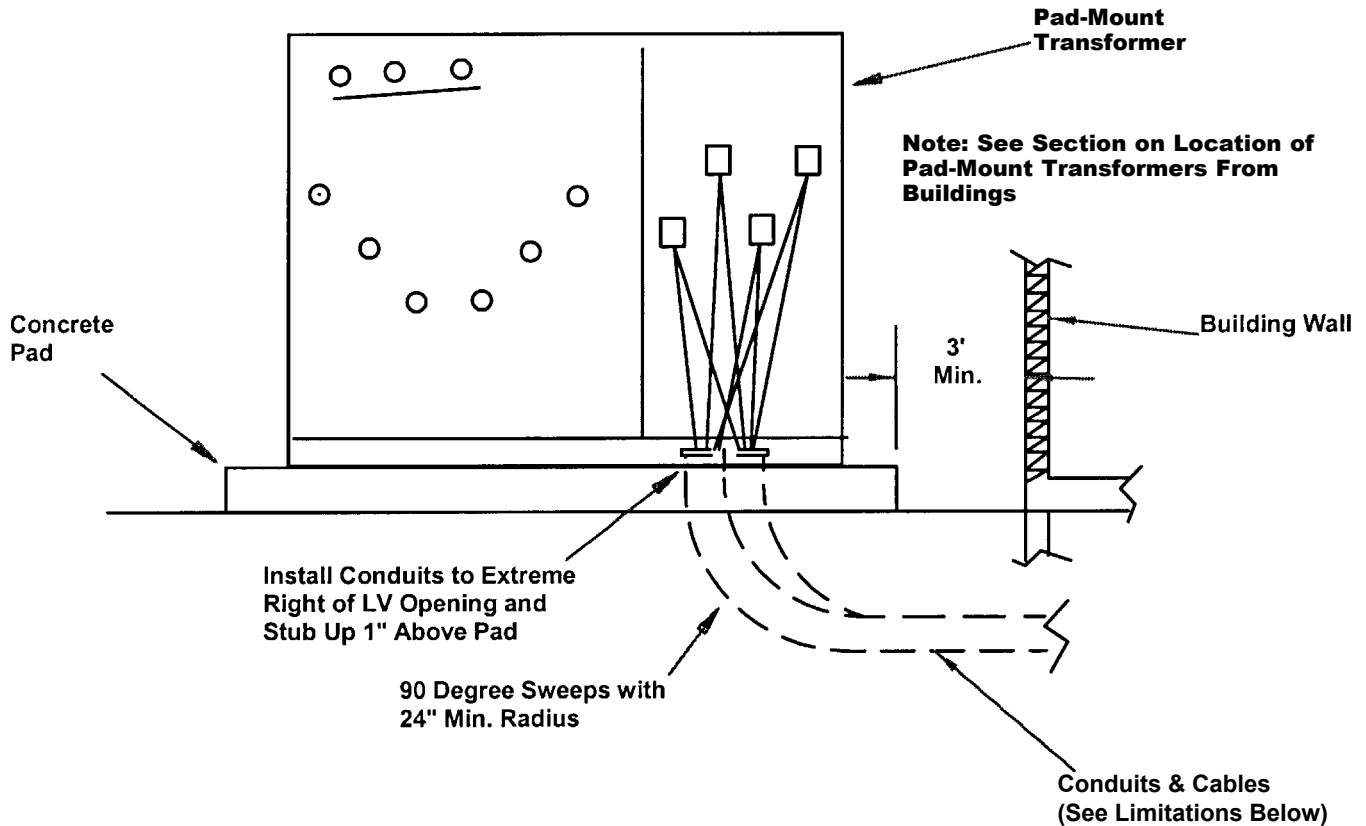


FIGURE 2
Transformer Concrete Pad and Protective Guard Post Specifications 45 to 1500 KVA 3PH Transformers



Note: 1. All secondary conduits shall be installed before pad is set or poured.
 2. See "Three-Phase Underground Service With or Without Connection Cabinet" for cable and conduit installation details.

FIGURE 3
Three-Phase Underground Service WITHOUT Connection Cabinet



Connexus Energy to provide:

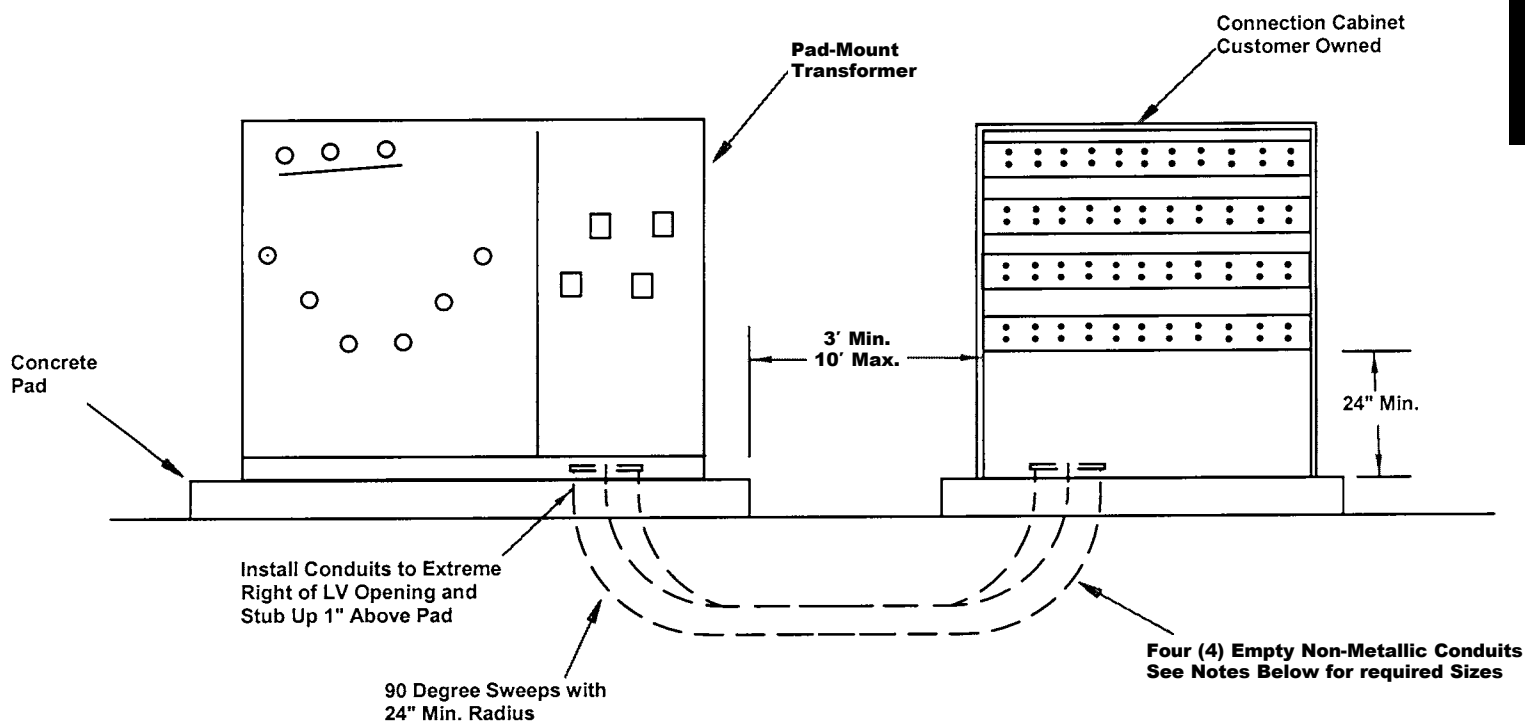
1. Pad-mount transformer, primary conductors, primary terminations, and transformer ground grid.
2. Secondary conductors for services — 200 amp and less — from transformer.
3. Secondary conductor terminations at the transformer.
4. For information on services with nominal voltages greater than 250 volts and service ratings 200 amps or less, see the topic **Voltage Requirements** in the **Electric Meter Requirements** section.

Customer to provide:

1. Concrete transformer pad, guard posts, and conduits. (NOTE: Conduit must be used for secondaries.)
2. Secondary conductors for services greater than 200 amp.
3. Secondary conduits from building to transformer. Install conduits at extreme right of LV side of transformer pad cable opening and a maximum of 1" above the transformer pad.
 Do not terminate conductors on transformer lugs. The number and size of conduits and conductors are limited to:
 - Maximum of four (4) 4-inch conduits
 - Maximum of four (4) conductors per phase
 - Maximum conductor size of 500 kCMIL CU or 750 kCMIL AL

If limitations are exceeded, a connection cabinet is required. See Figure 4 "Three-Phase Underground Service **with** Connection Cabinet" drawing.

FIGURE 4
Three-Phase Underground Service WITH Connection Cabinet



Connexus Energy to provide:

1. Pad-mount transformer, primary conductors, primary terminations, and transformer ground grid.
2. Secondary conductors from the transformer to connection cabinet and secondary terminations at transformer and connection cabinet.

Customer to provide:

1. Concrete transformer pad, guard posts, and conduits.
2. Connection cabinet with all buss-work and concrete pad. The lowest buss-bar in the connection cabinet shall not be less than 24" above the bottom of the cabinet.
3. Four (4) empty conduits from transformer to connection cabinet. The conduits and sweeps must be **non-metallic**. The size and number of conduits required per service are as follows:

Service Size	No. of Conduits	Size of Conduits and Sweeps
200 to 1600 Amp	4	4" non-metallic
2000 to 3000 Amp	4	5" non-metallic
Over 3000 Amp	Contact Connexus Energy	

Install conduits at extreme right of LV side of transformer pad opening and a maximum of 1" above the transformer pad and connection cabinet pad.

Note: Secondary throats from transformer to connection cabinet are not allowed.

4. Secondary conductors, terminations, and conduits from connection cabinet to customer service entrance.